

LICC/CTA
 FONTANAROSSA

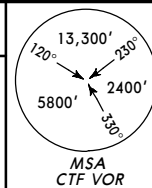
JEPPESEN

CATANIA, ITALY

9 FEB 07 (10-2) Eff 15 Feb

STAR

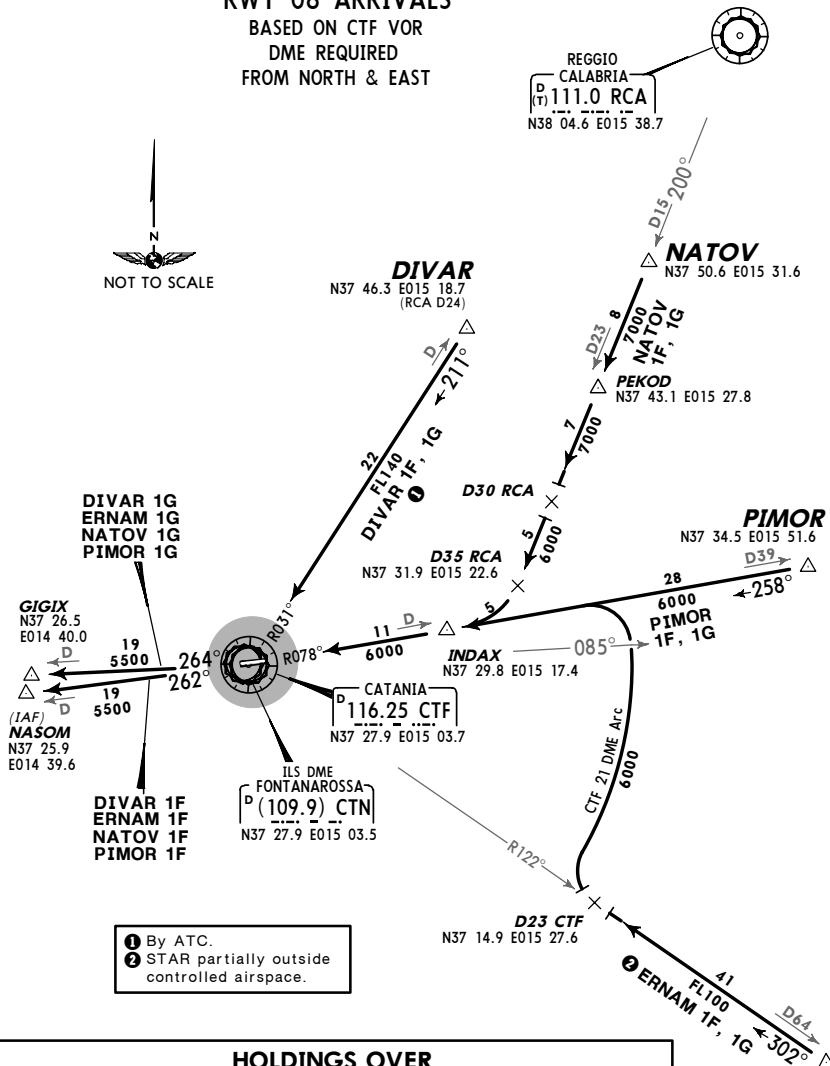
Apt Elev 39'
 Alt Set: hPa
 Trans level: By ATC Trans alt: 7000'



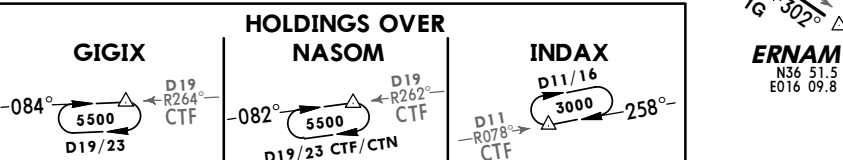
DIVAR 1F [DIVA1F] ●, DIVAR 1G [DIVA1G] ●
 ERNAM 1F [ERNA1F] ●, ERNAM 1G [ERNA1G] ●
 NATOV 1F [NATO1F], NATOV 1G [NATO1G]
 PIMOR 1F [PIMO1F], PIMOR 1G [PIMO1G]

RWY 08 ARRIVALS
 BASED ON CTF VOR
 DME REQUIRED
 FROM NORTH & EAST

REGGIO CALABRIA
 (P) 111.0 RCA
 N38 04.6 E015 38.7



1 By ATC.
 2 STAR partially outside controlled airspace.



LICC/CTA
 FONTANAROSSA

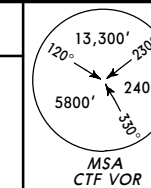
JEPPESEN

CATANIA, ITALY

9 FEB 07 (10-2A) Eff 15 Feb

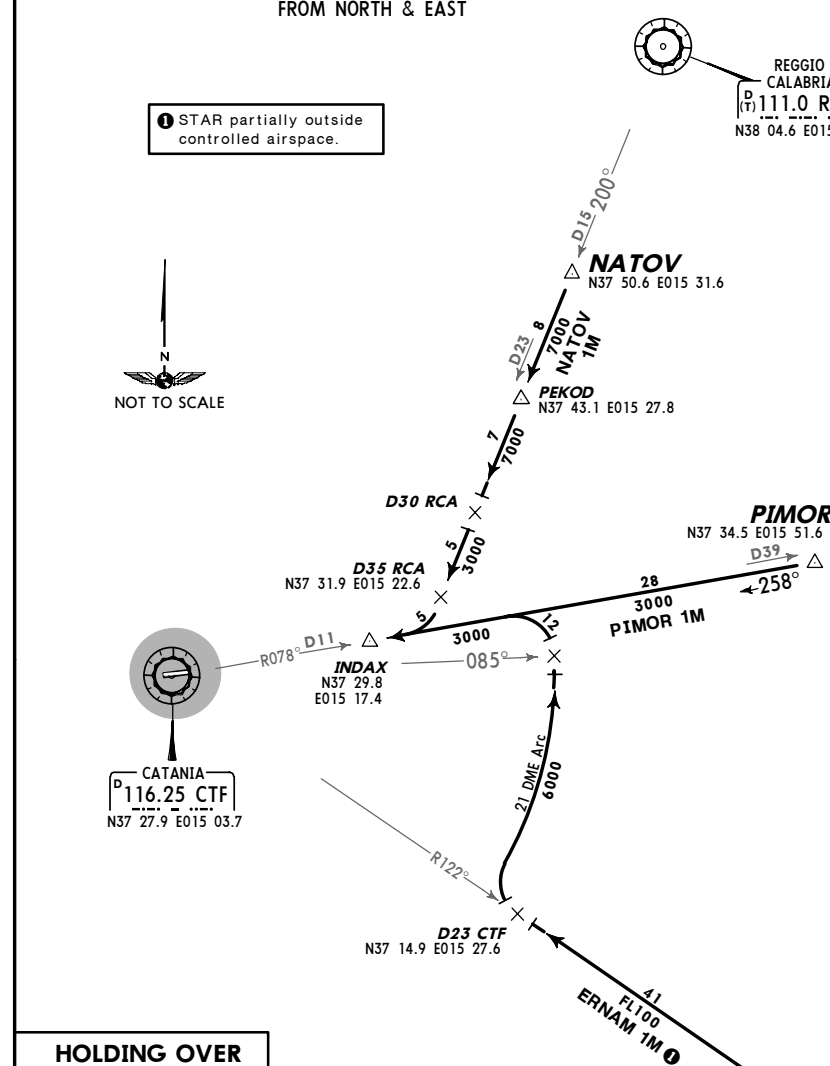
STAR

Apt Elev 39'
 Alt Set: hPa
 Trans level: By ATC Trans alt: 7000'



ERNAM 1M [ERNA1M] ●, NATOV 1M [NATO1M]
 PIMOR 1M [PIMO1M]
 RWY 26 ARRIVALS
 BASED ON CTF VOR
 DME REQUIRED
 FROM NORTH & EAST

REGGIO CALABRIA
 (P) 111.0 RCA
 N38 04.6 E015 38.7



LICC/CTA
 FONTANAROSSA

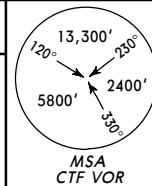
JEPPESEN

CATANIA, ITALY

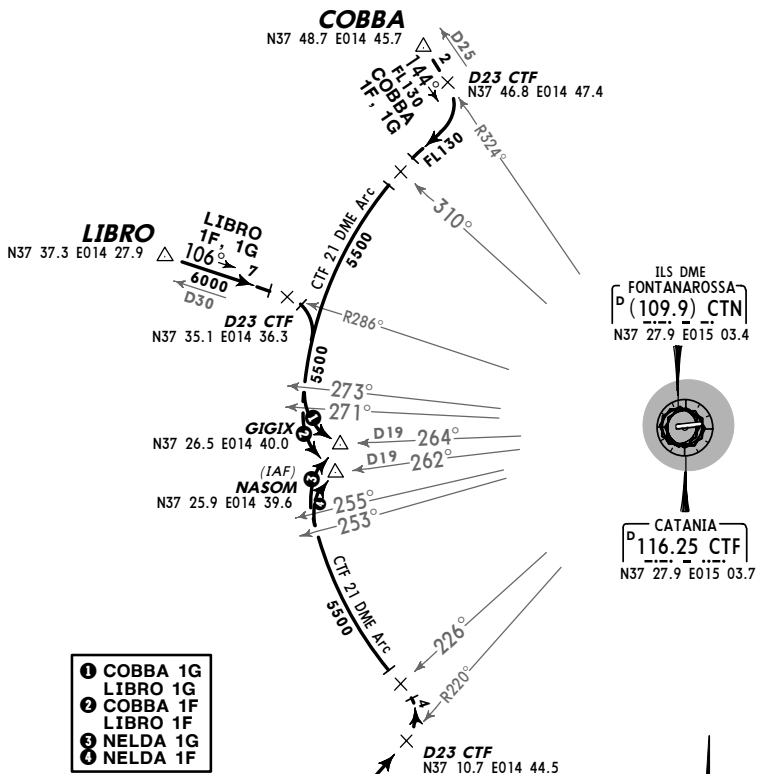
7 APR 06 (10-2B) Eff 13 Apr

STAR

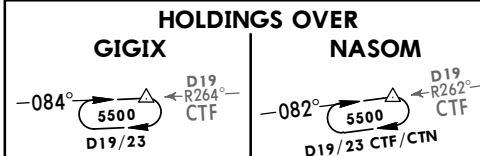
Apt Elev 39'
 Alt Set: hPa
 Trans level: By ATC Trans alt: 7000'



COBBA 1F [COBA1F], COBBA 1G [COBA1G]
 LIBRO 1F [LIBR1F], LIBRO 1G [LIBR1G]
 NELDA 1F [NELD1F], NELDA 1G [NELD1G]
 RWY 08 ARRIVALS
 BASED ON CTF VOR
 DME REQUIRED
 FROM WEST



- 1 COBBA 1G
- 2 LIBRO 1G
- 3 COBBA 1F
- 4 LIBRO 1F
- 5 NELDA 1G
- 6 NELDA 1F



LICC/CTA
 FONTANAROSSA

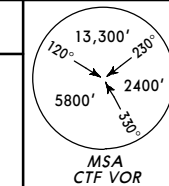
JEPPESEN

CATANIA, ITALY

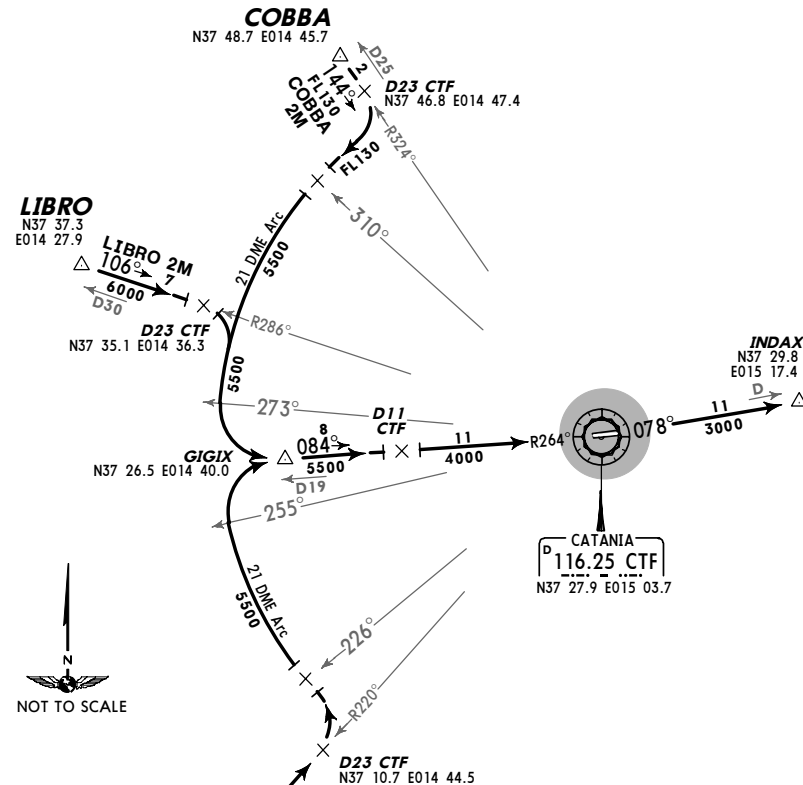
7 APR 06 (10-2C) Eff 13 Apr

STAR

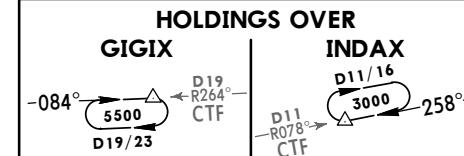
Apt Elev 39'
 Alt Set: hPa
 Trans level: By ATC Trans alt: 7000'



COBBA 2M [COBA2M], LIBRO 2M [LIBR2M]
 NELDA 2M [NELD2M]
 RWY 26 ARRIVALS
 BASED ON CTF VOR
 DME REQUIRED
 FROM WEST



NELDA
 N36 51.8 E014 23.6

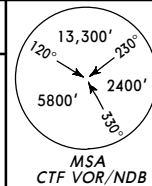


LICC/CTA
 FONTANAROSSA

JEPPESEN
 9 FEB 07 (10-2D) Eff 15 Feb

CATANIA, ITALY
 STAR

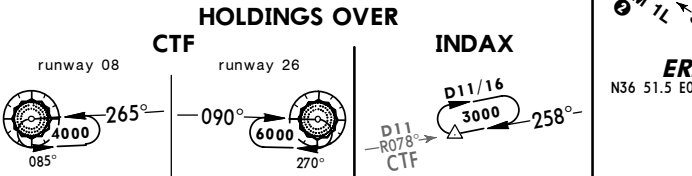
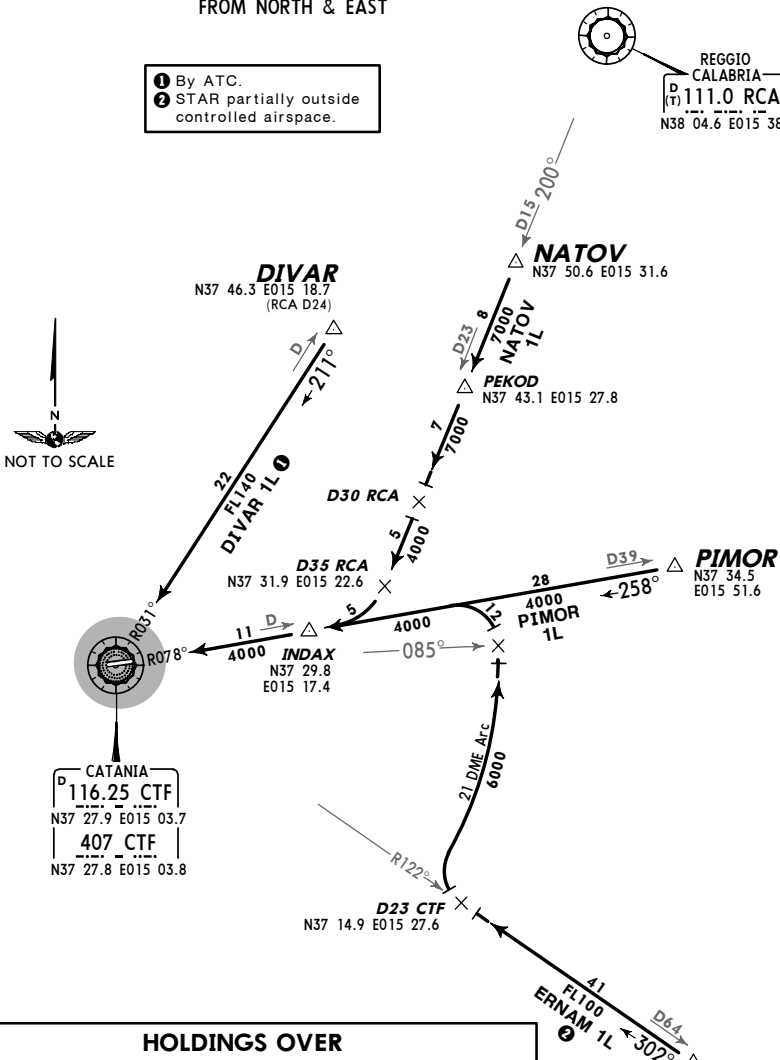
Apt Elev 39' Alt Set: hPa Trans level: By ATC Trans alt: 7000'



DIVAR 1L [DIVA1L] ●, ERNAM 1L [ERNA1L] ●
 NATOV 1L [NATO1L], PIMOR 1L [PIMO1L]
 RWYS 08, 26 ARRIVALS
 BASED ON CTF NDB/VOR
 DME REQUIRED
 FROM NORTH & EAST

- By ATC.
- STAR partially outside controlled airspace.

REGGIO CALABRIA
 D 111.0 RCA
 N38 04.6 E015 38.7



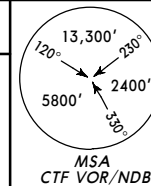
CHANGES: PEKOD STAR replaced by NATOV STAR. © JEPPESEN SANDERSON, INC., 2005, 2007. ALL RIGHTS RESERVED.

LICC/CTA
 FONTANAROSSA

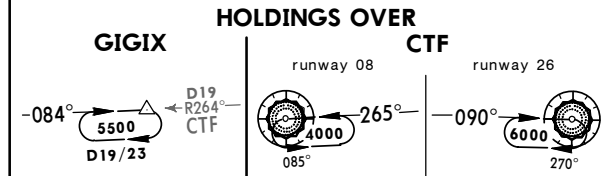
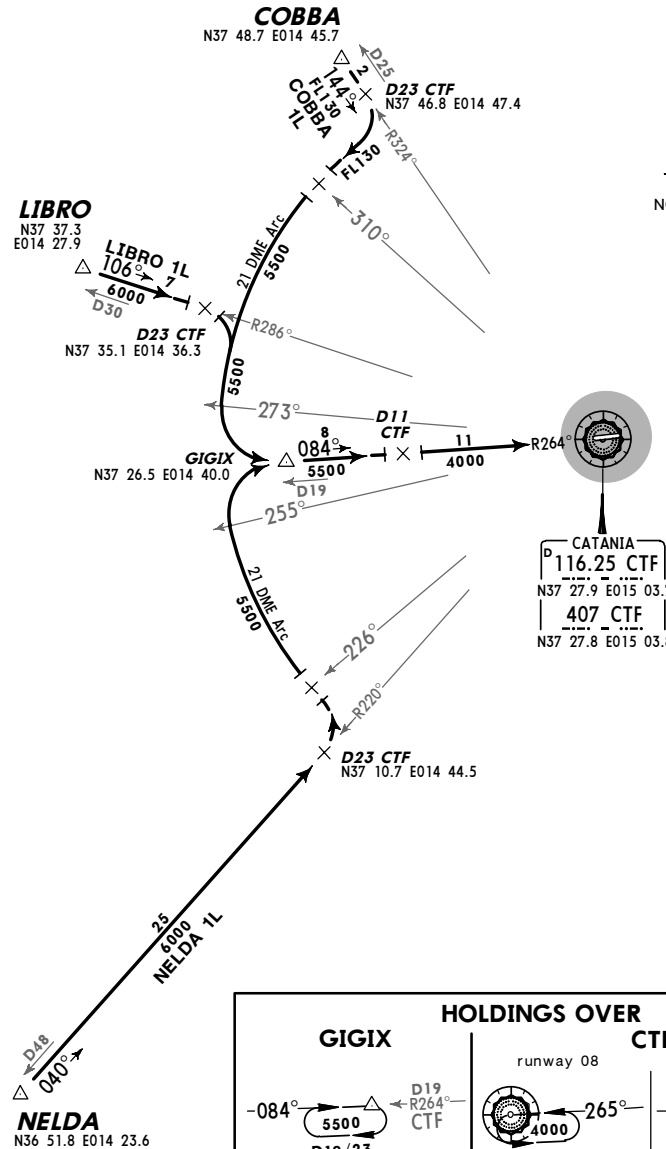
JEPPESEN
 9 FEB 07 (10-2E) Eff 15 Feb

CATANIA, ITALY
 STAR

Apt Elev 39' Alt Set: hPa Trans level: By ATC Trans alt: 7000'



COBBA 1L [COBA1L], LIBRO 1L [LIBR1L]
 NELDA 1L [NELD1L]
 RWYS 08, 26 ARRIVALS
 BASED ON CTF NDB/VOR
 DME REQUIRED
 FROM WEST



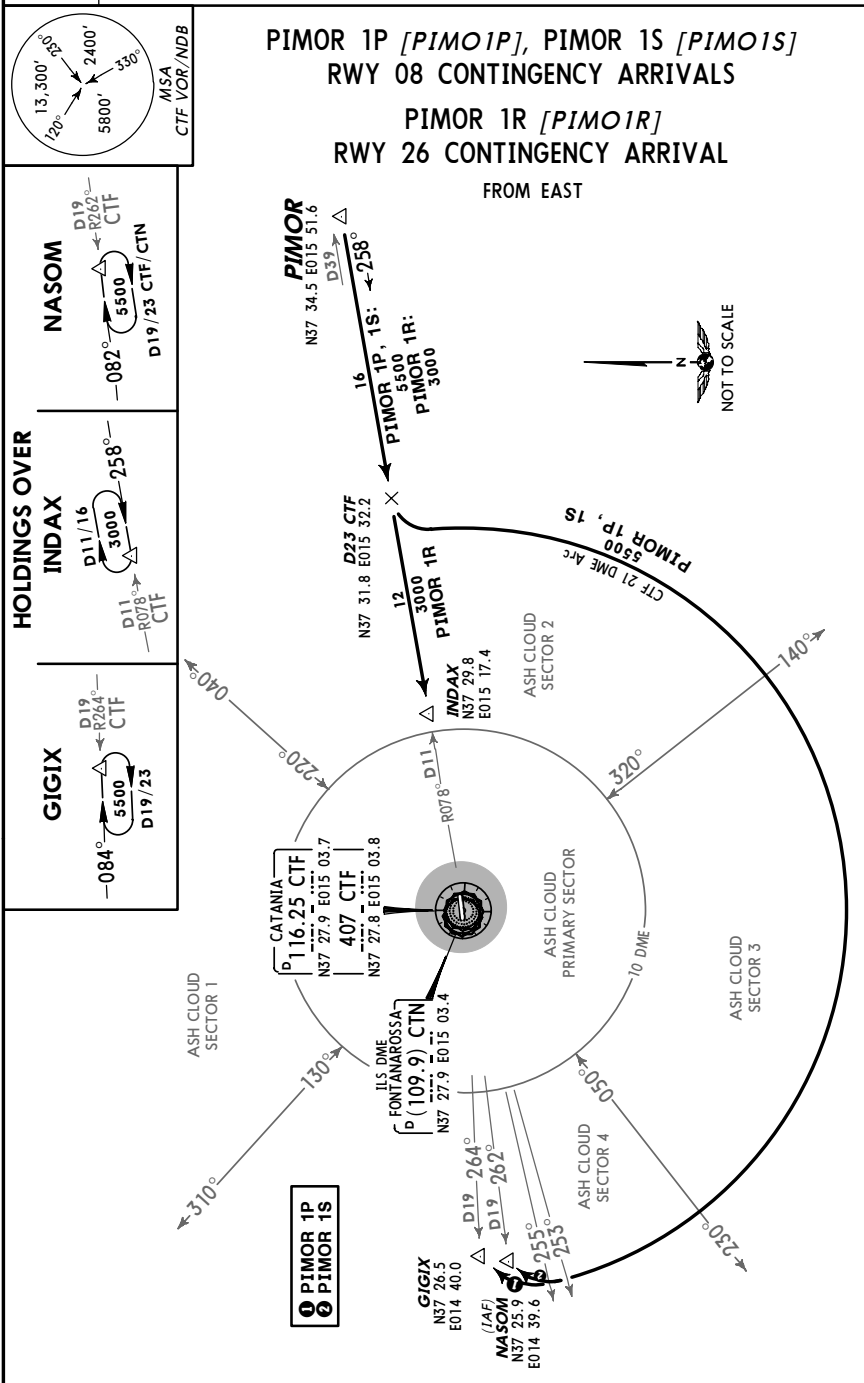
CHANGES: None. © JEPPESEN SANDERSON, INC., 2005, 2006. ALL RIGHTS RESERVED.

LICC/CTA
 FONTANAROSSA

JEPPESEN
 7 APR 06 (10-2F) Eff 13 Apr

CATANIA, ITALY
 STAR

Apt Elev 39'
 Alt Set: hPa
 Trans level: By ATC Trans alt: 7000'



CHANGES: Chart reindexed.

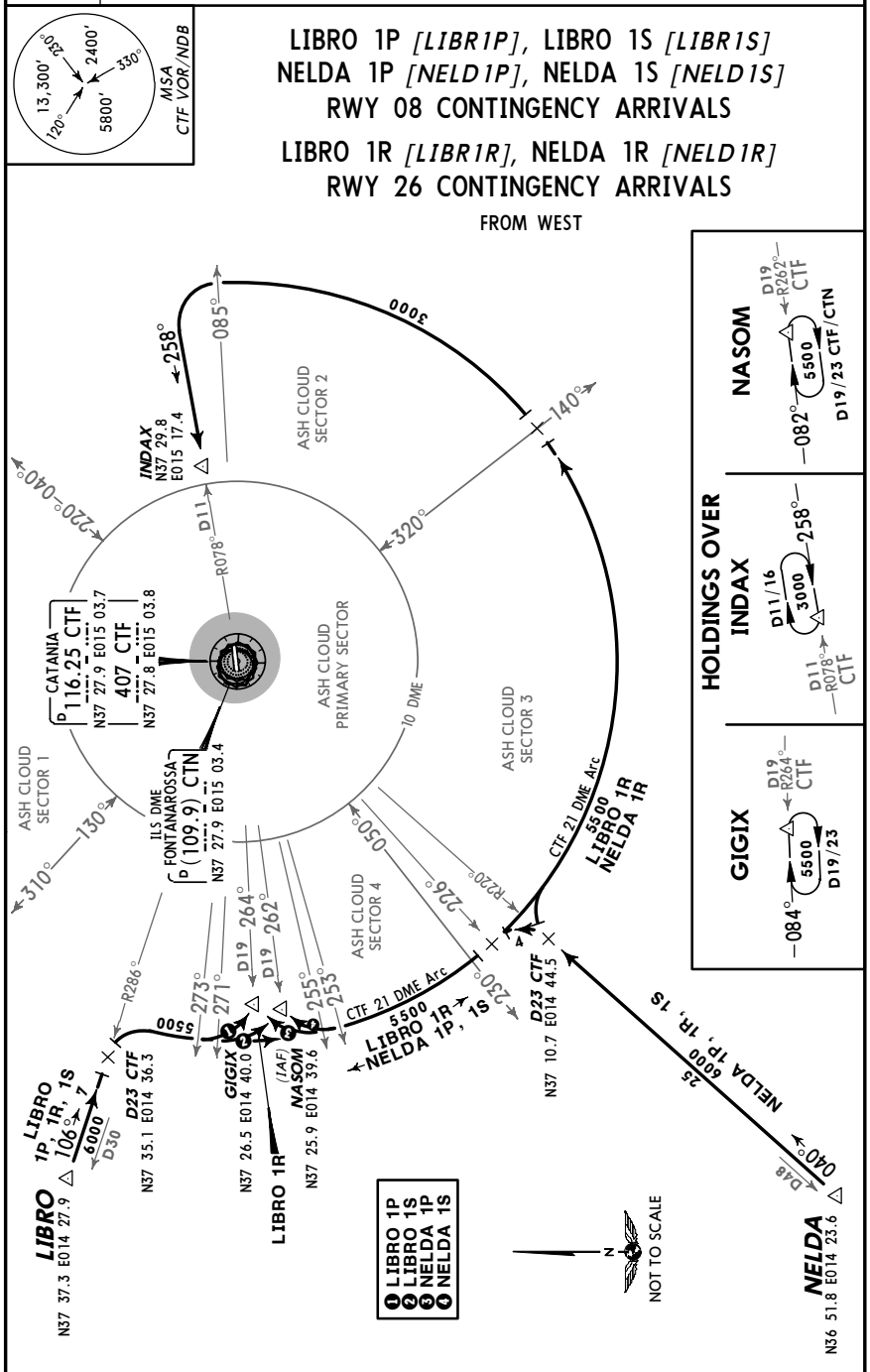
© JEPPESEN SANDERSON, INC., 2005, 2006. ALL RIGHTS RESERVED.

LICC/CTA
 FONTANAROSSA

JEPPESEN
 7 APR 06 (10-2G) Eff 13 Apr

CATANIA, ITALY
 STAR

Apt Elev 39'
 Alt Set: hPa
 Trans level: By ATC Trans alt: 7000'



CHANGES: Chart reindexed.

© JEPPESEN SANDERSON, INC., 2005, 2006. ALL RIGHTS RESERVED.

LICC/CTA
 FONTANAROSSA

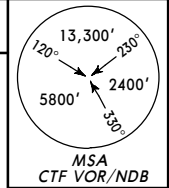
JEPPESEN

CATANIA, ITALY

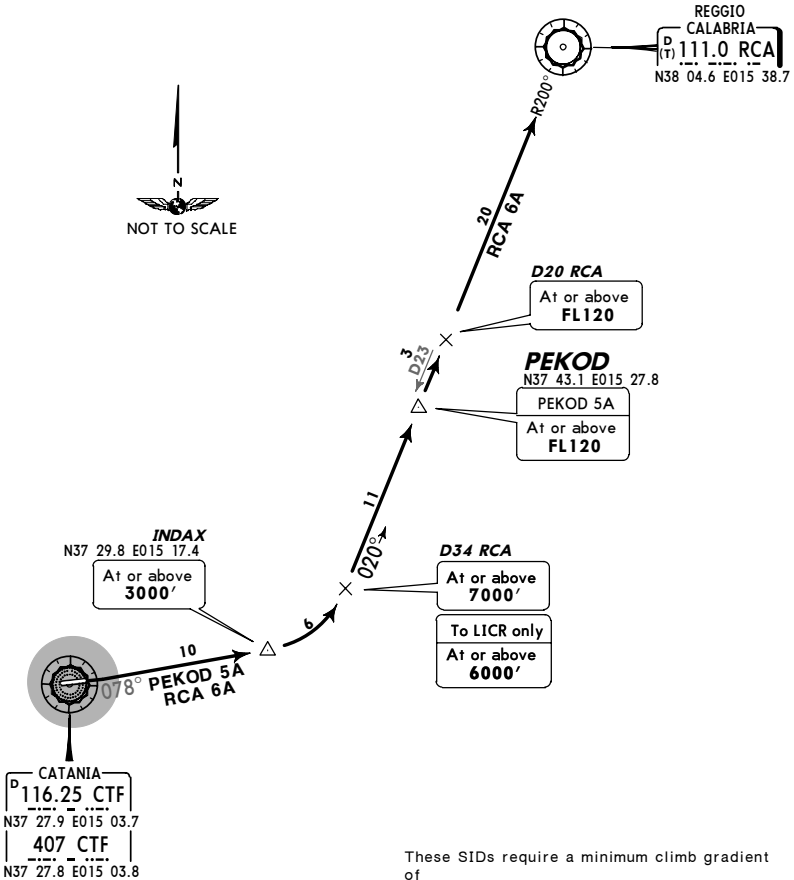
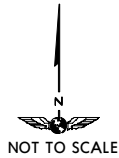
9 FEB 07 (10-3) Eff 15 Feb

SID

Apt Elev 39'
 Trans level: By ATC Trans alt: 7000'
 EXPECT close-in obstacles.



PEKOD 5A [PEK05A]
 RCA 6A
 RWY 08 DEPARTURES
 TO NORTH



These SIDs require a minimum climb gradient of

PEKOD 5A
 480' per NM (7.9%) until passing **FL120**
RCA 6A
 480' per NM (7.9%) until passing **7000'**
 due to ATC purposes.

Gnd speed-KT	75	100	150	200	250	300
480' per NM	600	800	1200	1600	2000	2400

SID	ROUTING
PEKOD 5A	As soon as practicable intercept CTF R-078 to INDAX, turn LEFT, intercept RCA R-200 inbound to PEKOD.
RCA 6A	As soon as practicable intercept CTF R-078 to INDAX, turn LEFT, intercept RCA R-200 inbound to RCA.

LICC/CTA
 FONTANAROSSA

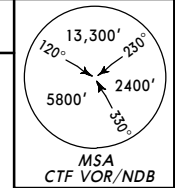
JEPPESEN

CATANIA, ITALY

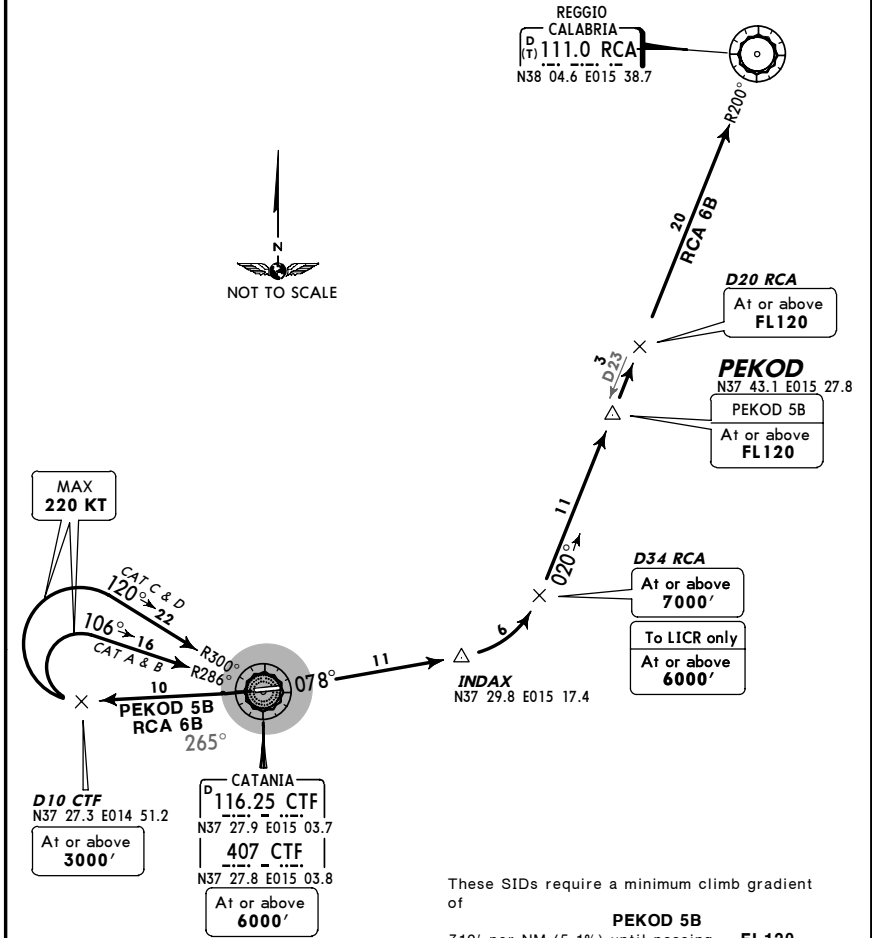
9 FEB 07 (10-3A) Eff 15 Feb

SID

Apt Elev 39'
 Trans level: By ATC Trans alt: 7000'
 EXPECT close-in obstacles.



PEKOD 5B [PEK05B]
 RCA 6B
 RWY 26 DEPARTURES
 TO NORTH



These SIDs require a minimum climb gradient of

PEKOD 5B
 310' per NM (5.1%) until passing **FL120**.
RCA 6B
 310' per NM (5.1%) until passing **4500'**.

Gnd speed-KT	75	100	150	200	250	300
310' per NM	387	516	775	1033	1291	1549

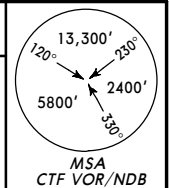
SID	ROUTING
PEKOD 5B	As soon as practicable intercept CTF R-265 to D10 CTF, turn RIGHT, intercept CTF R-286 (CAT A & B) or CTF R-300 (CAT C & D) inbound to CTF, CTF R-078 to INDAX, turn LEFT, intercept RCA R-200 inbound to PEKOD.
RCA 6B	As soon as practicable intercept CTF R-265 to D10 CTF, turn RIGHT, intercept CTF R-286 (CAT A & B) or CTF R-300 (CAT C & D) inbound to CTF, CTF R-078 to INDAX, turn LEFT, intercept RCA R-200 inbound to RCA.

LICC/CTA
 FONTANAROSSA

JEPPESEN
 9 FEB 07 (10-3A1) Eff 15 Feb

CATANIA, ITALY
 SID

Apt Elev 39'
 Trans level: By ATC Trans alt: 7000'
 EXPECT close-in obstacles.



ERNAM 6A [ERNA6A]
PIMOR 6A [PIMO6A]
 RWY 08 DEPARTURES
 TO EAST



PIMOR
 N37 34.5 E015 51.6
 At or above
FL100

INDAX
 N37 29.8 E015 17.4
 At or above
3000'

D19 CTF
 N37 31.1 E015 27.3

CATANIA
 P 116.25 CTF
 N37 27.9 E015 03.7
 407 CTF
 N37 27.8 E015 03.8

① SID partially outside controlled airspace.

ERNAM
 N36 51.5 E016 09.8
 At or above
FL200

These SIDs require a minimum climb gradient of

ERNAM 6A
 328' per NM (5.4%) until passing **5000'**
PIMOR 6A
 328' per NM (5.4%) until passing **5500'**
 due to ATC purposes.

Gnd speed-KT	75	100	150	200	250	300
328' per NM	410	547	820	1094	1367	1641

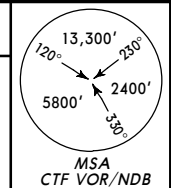
SID	ROUTING
ERNAM 6A	As soon as practicable intercept CTF R-078 via INDAX to D19 CTF, turn RIGHT, along CTF 21 DME arc, when passing CTF R-115 turn LEFT, intercept CTF R-122 to ERNAM.
PIMOR 6A	As soon as practicable intercept CTF R-078 via INDAX to PIMOR.

LICC/CTA
 FONTANAROSSA

JEPPESEN
 9 FEB 07 (10-3A2) Eff 15 Feb

CATANIA, ITALY
 SID

Apt Elev 39'
 Trans level: By ATC Trans alt: 7000'
 EXPECT close-in obstacles.



ERNAM 6B [ERNA6B]
PIMOR 6B [PIMO6B]
 RWY 26 DEPARTURES
 TO EAST



PIMOR
 N37 34.5 E015 51.6
 At or above
FL100

MAX
220 KT

CAT C & D
 120°-22
CAT A & B
 106°-16

D10 CTF
 N37 27.3 E014 51.2
 At or above
3000'

CATANIA
 P 116.25 CTF
 N37 27.9 E015 03.7
 407 CTF
 N37 27.8 E015 03.8
 At or above
6000'

INDAX
 N37 29.8 E015 17.4

① SID partially outside controlled airspace.

ERNAM 6B
 N36 51.5 E016 09.8
 At or above
FL200

These SIDs require a minimum climb gradient of
 310' per NM (5.1%) until passing **4500'**.

Gnd speed-KT	75	100	150	200	250	300
310' per NM	387	516	775	1033	1291	1549

SID	ROUTING
ERNAM 6B	As soon as practicable intercept CTF R-265 to D10 CTF, turn RIGHT, intercept CTF R-286 (CAT A & B) or CTF R-300 (CAT C & D) inbound to CTF, CTF R-078 to D19 CTF, turn RIGHT, along CTF 21 DME arc, when passing CTF R-115 turn LEFT, intercept CTF R-122 to ERNAM.
PIMOR 6B	As soon as practicable intercept CTF R-265 to D10 CTF, turn RIGHT, intercept CTF R-286 (CAT A & B) or CTF R-300 (CAT C & D) inbound to CTF, CTF R-078 to PIMOR.

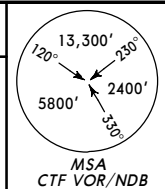
LICC/CTA
 FONTANAROSSA

JEPPESEN
 16 DEC 05 (10-3B) Eff 22 Dec

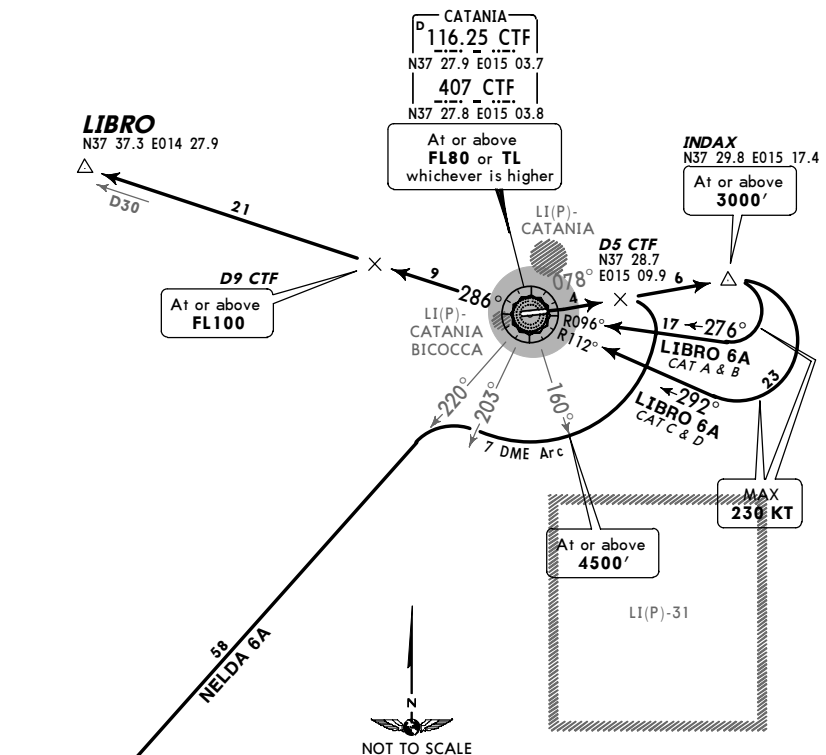
CATANIA, ITALY

SID

Apt Elev 39'
 Trans level: By ATC Trans alt: 7000'
 EXPECT close-in obstacles.



LIBRO 6A [LIBR6A], NELDA 6A [NELD6A]
 RWY 08 DEPARTURES
 TO WEST



These SIDs require minimum climb gradients of

LIBRO 6A
 328' per NM (5.4%) until passing **FL95**
NELDA 6A
 365' per NM (6%) until passing **5000'**
 due to ATC purposes.

Gnd speed-KT	75	100	150	200	250	300
328' per NM	410	547	820	1094	1367	1641
365' per NM	456	608	911	1215	1519	1823

SID	ROUTING
LIBRO 6A	As soon as practicable intercept CTF R-078 to INDAX, turn RIGHT, intercept CTF R-096 inbound (CAT A & B) or CTF R-112 inbound (CAT C & D) to CTF, CTF R-286 to LIBRO.
NELDA 6A	As soon as practicable intercept CTF R-078 to D5 CTF, turn RIGHT, along CTF 7 DME arc, when passing CTF R-203 turn LEFT, intercept CTF R-220 to NELDA.

CHANGES: SIDs renumbered, revised, transferred & withdrawn. © JEPPESEN SANDERSON, INC., 2002, 2005. ALL RIGHTS RESERVED.

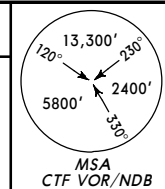
LICC/CTA
 FONTANAROSSA

JEPPESEN
 16 DEC 05 (10-3C) Eff 22 Dec

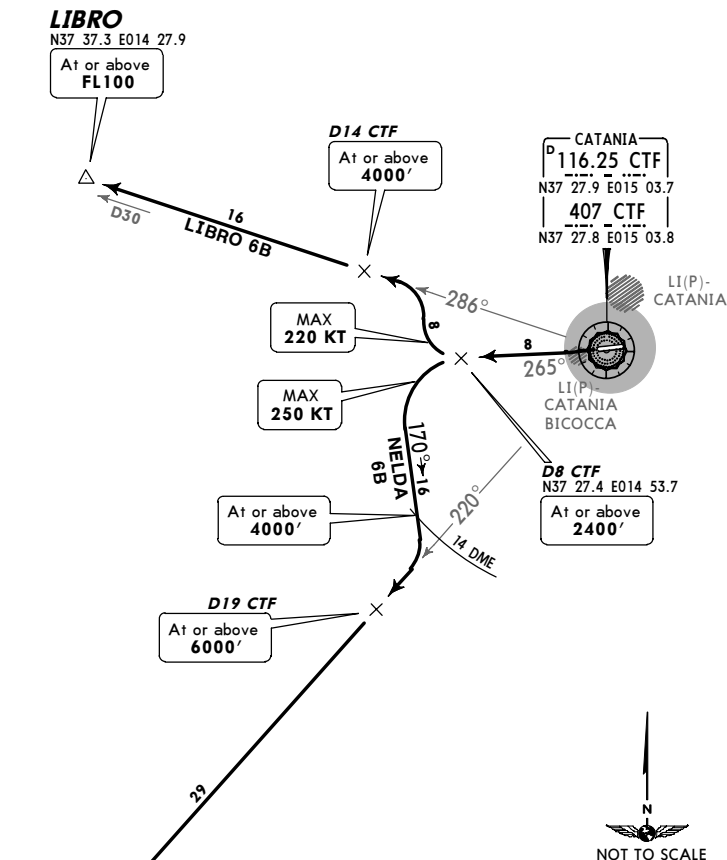
CATANIA, ITALY

SID

Apt Elev 39'
 Trans level: By ATC Trans alt: 7000'
 EXPECT close-in obstacles.



LIBRO 6B [LIBR6B], NELDA 6B [NELD6B]
 RWY 26 DEPARTURES
 TO WEST



These SIDs require minimum climb gradients of

LIBRO 6B
 310' per NM (5.1%) until passing **7000'**.
NELDA 6B
 310' per NM (5.1%) until passing **5000'**.

Gnd speed-KT	75	100	150	200	250	300
310' per NM	387	516	775	1033	1291	1549

SID	ROUTING
LIBRO 6B	As soon as practicable intercept CTF R-286 to D8 CTF, turn RIGHT, intercept CTF R-286 to LIBRO.
NELDA 6B	As soon as practicable intercept CTF R-265 to D8 CTF, turn LEFT, 170° track, intercept CTF R-220 to NELDA.

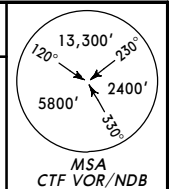
CHANGES: SIDs renumbered, revised, transferred & withdrawn. © JEPPESEN SANDERSON, INC., 2002, 2005. ALL RIGHTS RESERVED.

LICC/CTA
 FONTANAROSSA

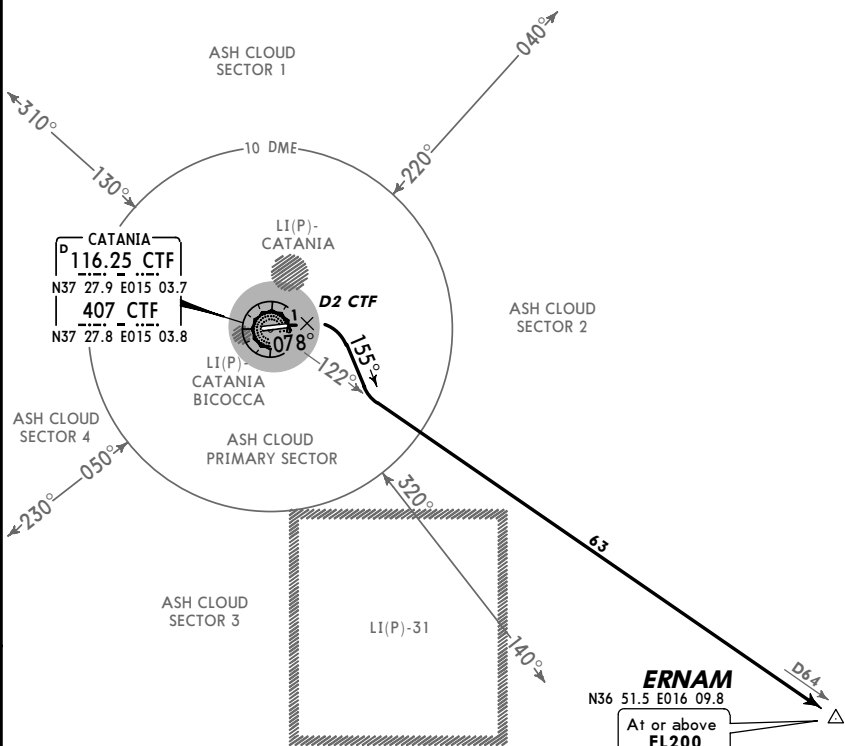
JEPPESEN
 16 DEC 05 (10-3D) Eff 22 Dec

CATANIA, ITALY
 SID

Apt Elev 39' Trans level: By ATC Trans alt: 7000'
 EXPECT close-in obstacles.



ERNAM 6E [ERNA6E]
RWY 08 CONTINGENCY DEPARTURE
 SID PARTIALLY OUTSIDE CONTROLLED AIRSPACE



ERNAM
 N36 51.5 E016 09.8
 At or above
FL200



This SID requires a minimum climb gradient of 328' per NM (5.4%) until passing 1000'.

Gnd speed-KT	75	100	150	200	250	300
328' per NM	410	547	820	1094	1367	1641

ROUTING

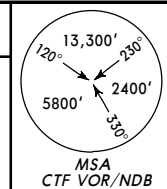
As soon as practicable intercept CTF R-078 to D2 CTF, turn RIGHT, 155° track, intercept CTF R-122 to ERNAM.

LICC/CTA
 FONTANAROSSA

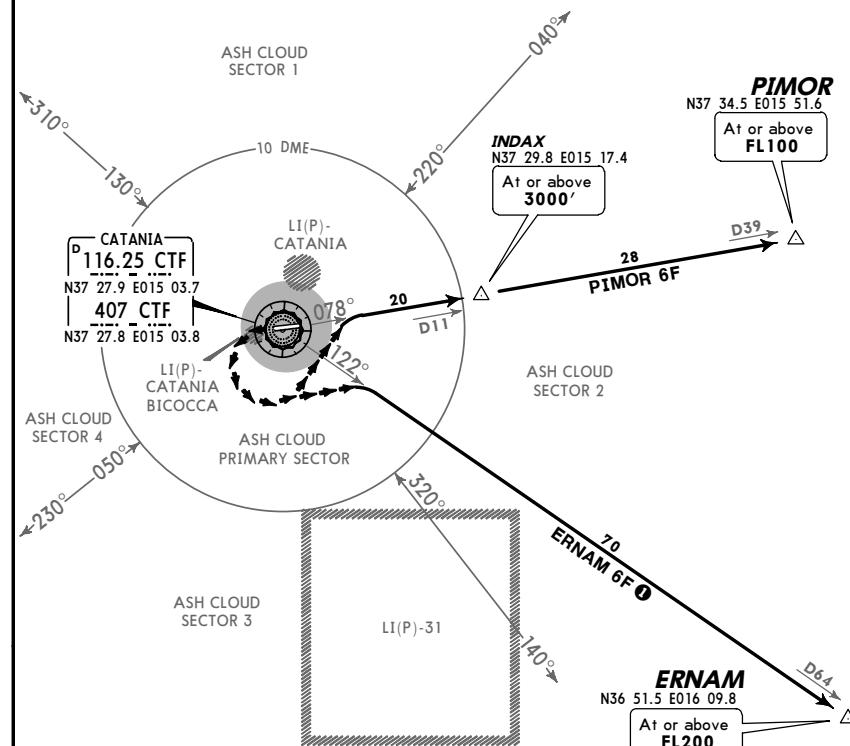
JEPPESEN
 16 DEC 05 (10-3E) Eff 22 Dec

CATANIA, ITALY
 SID

Apt Elev 39' Trans level: By ATC Trans alt: 7000'
 EXPECT close-in obstacles.



ERNAM 6F, PIMOR 6F
RWY 26 CONTINGENCY DEPARTURES



ERNAM
 N36 51.5 E016 09.8
 At or above
FL200



These SIDs require a minimum climb gradient of 304' per NM (5%).

Gnd speed-KT	75	100	150	200	250	300
304' per NM	380	506	760	1013	1266	1519

SID

ROUTING

ERNAM 6F	Meteorological minima: ceiling 1500'; visibility 5000m. Climb visually, as soon as practicable turn LEFT, intercept CTF R-122, maintain visual conditions until passing 3000', to ERNAM.
PIMOR 6F	Meteorological minima: ceiling 1500'; visibility 5000m. Climb visually, as soon as practicable turn LEFT, intercept CTF R-078, maintain visual conditions until passing 3000', to PIMOR.

LICC/CTA

JEPPESEN

CATANIA, ITALY

21 SEP 07 (10-6)

FONTANAROSSA

**CONTINGENCY PROCEDURES
 IN CASE OF VOLCANIC ASH CLOUD**

GENERAL

In order to prevent dangerous effects on the safety of operations of aircraft to/from CATANIA Fontanarossa airport, both in flight and on the ground, due to the presence of volcanic ash cloud during the eruption of Mt ETNA and in order to facilitate the flow of traffic, contingency procedures have been implemented.

All crews will use maximum caution in order to avoid any contact with mentioned phenomena.

To ensure a flexible management of the airspace concerned and of the relevant traffic, the airspace within which the volcanic phenomena will be is divided in ASH CLOUD SECTORS depicted on charts 10-2F, 10-2G, 10-3D & 10-3E.

ASH CLOUD IN THE PRIMARY SECTOR

The presence of the ash cloud in the primary area is likely to determine the closure of the aerodrome to all of flight operations.

OPERATIONAL LIMITATIONS WHEN ASH CLOUD IN THE SECONDARY SECTOR

SECTOR 1 (NORTH)

Approach procedures are not affected. SID for both RWY's are all usable with the exception of those based on RCA VOR. Aircraft bound to RCA VOR will be cleared on contingency SID PIMOR 6A/6F RWY 08/26.

SECTOR 1 & 2 (NORTH/EAST)

Approach procedures RWY 08 in use:
 The only procedure not affected is the NDB RWY 08.
 Contingency approach procedures have been implemented.

Approach procedures RWY 26 in use:
 All procedures for RWY 08 can be performed, together with a subsequent circling South of airport (if meteorological conditions permit).

SID shall include the preferential use of RWY 26 towards SECTOR 3 & 4. If meteorological conditions determine the use of RWY 08, take off and initial climb shall be performed visual with RIGHT turn after take off (anyhow not beyond 5 NM from CTF VOR) directed to CTF VOR to join the assigned SID.

SECTOR 1 & 4 (NORTH/WEST)

In addition to the provisions in force in case of ash cloud in SECTOR 1 the following limitations apply:

Approach procedures:
 RWY 26 in use: CONTINGENCY VOR-X procedure has been implemented.

RWY 08 in use: Only procedures for RWY 26 can be performed, together with a subsequent circling South of the field. In addition NDB RWY 08 procedure can be authorized provided that it is conducted with strict adherence to flight path and to parameters published for it.

SID shall include the preferential use of RWY 08 towards SECTOR 2 & 3. If meteorological conditions determine the use of RWY 26, take off and initial climb shall be performed visual with LEFT turn after take off directed to INDAX point to join the assigned or modified SID.

SID NELDA 6B is not subjected to restrictions.

LICC/CTA

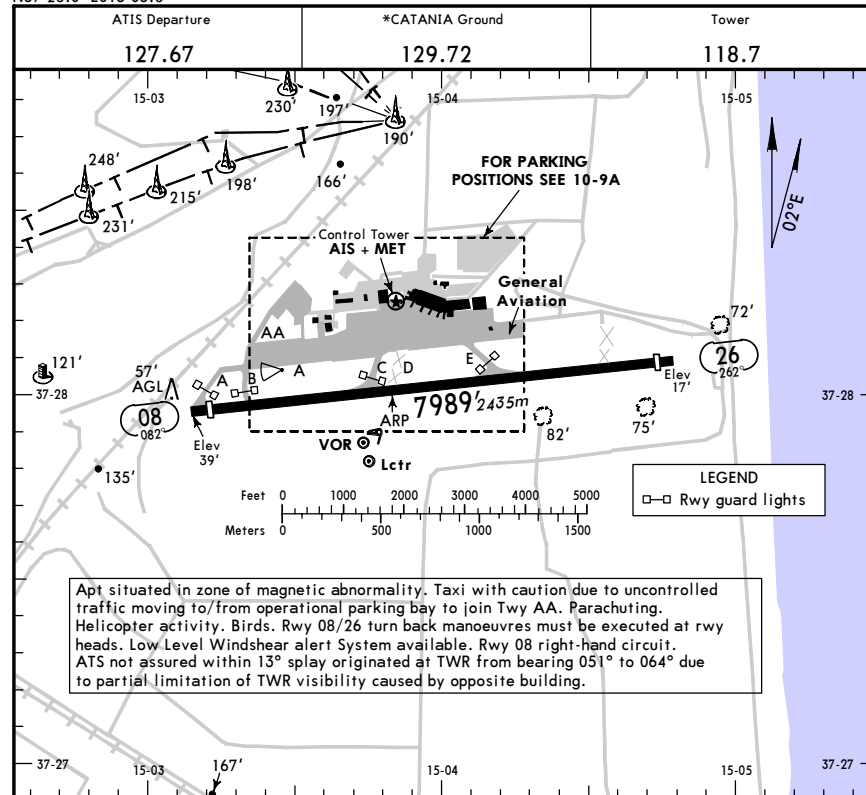
JEPPESEN

CATANIA, ITALY

Apt Elev 39'
 N37 28.0 E015 03.8

2 NOV 07 (10-9)

FONTANAROSSA



Apt situated in zone of magnetic abnormality. Taxi with caution due to uncontrolled traffic moving to/from operational parking bay to join Twy AA. Parachuting. Helicopter activity. Birds. Rwy 08/26 turn back manoeuvres must be executed at rwy heads. Low Level Windshear alert System available. Rwy 08 right-hand circuit. ATS not assured within 13° splay originated at TWR from bearing 051° to 064° due to partial limitation of TWR visibility caused by opposite building.

ADDITIONAL RUNWAY INFORMATION

RWY	HIRL	CL (30m)	REIL	PAPI (angle 3.0°)	RVR	USABLE LENGTHS		TAKE-OFF	WIDTH	
						Threshold	Landing Beyond			
08						7677'	2340m	6315'	1925m	148'
26						7710'	2350m			45m

① Azimuth coverage reduced to 5° RIGHT and 8° LEFT side of RCL.

② TAKE-OFF RUN AVAILABLE

RWY 08:
 From rwy head 7989' (2435m)
 twy B int 6988' (2130m)

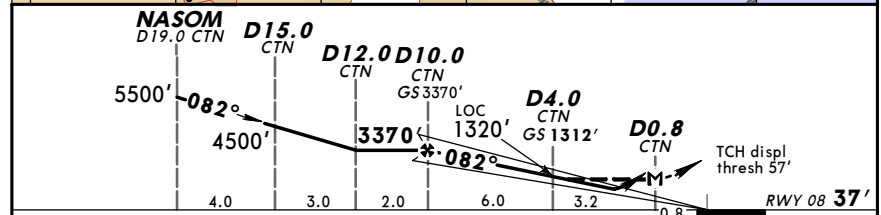
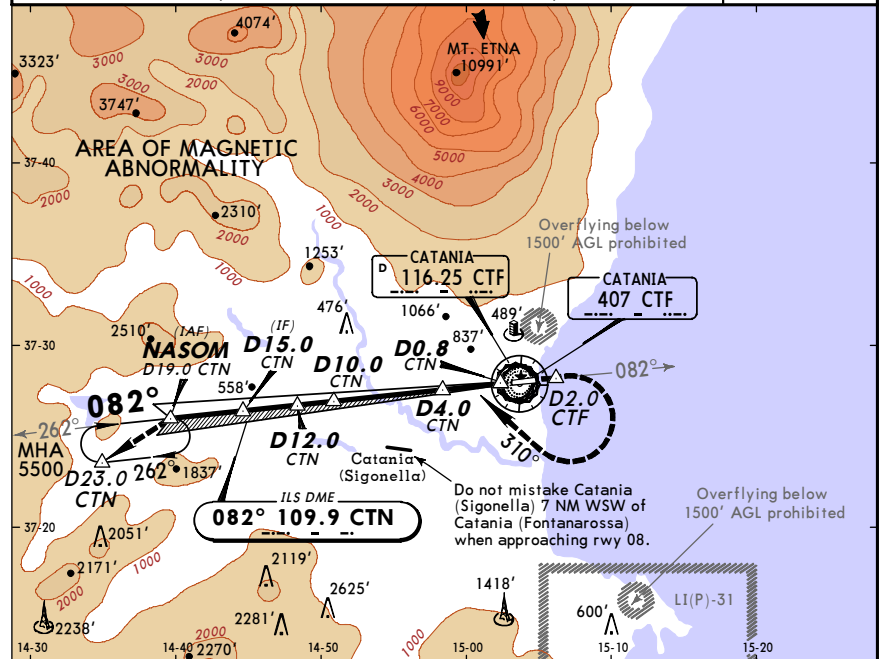
JAR-OPS

TAKE-OFF

	Rwy 08			Rwy 26		
	RL & CL	RCLM (DAY only) or RL	NIL (DAY only)	RL & CL	RCLM (DAY only) or RL	NIL (DAY only)
A						
B						
C	RVR 800m			VIS 800m		
D						

LICC/CTA CATANIA, ITALY
 FONTANAROSSA 7 JUL 06 (11-2) CONTINGENCY ILS Y Rwy 08

CATANIA Radar (APP) 119.25		CATANIA Tower 118.7		*Ground 129.72	
LOC CTN 109.9	Final ApcH Crs 082°	GS D4.0 CTN 1312' (1275')	ILS DA(H) Refer to Minimums	Apt Elev 39'	RWY 37'
MISSED APCH: Maintain 082° and climb to 5500'. At D2.0 CTF turn RIGHT (MAX 200 KT) onto 310° to join and follow R-262 to holding.					
Alt Set: hPa Rwy Elev: 1 hPa Trans level: By ATC Trans alt: 7000' 1. VOR DME REQUIRED. 2. ILS DME reads zero at rwy 08 displ thresh. 3. Mt ETNA 10991' 17.0 NM North of apt. 4. Possible existence of volcanic cloud up to 20000'.					

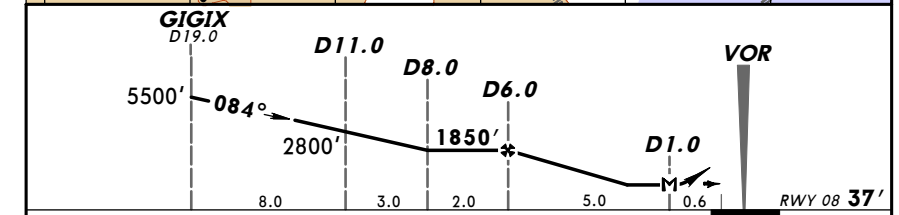
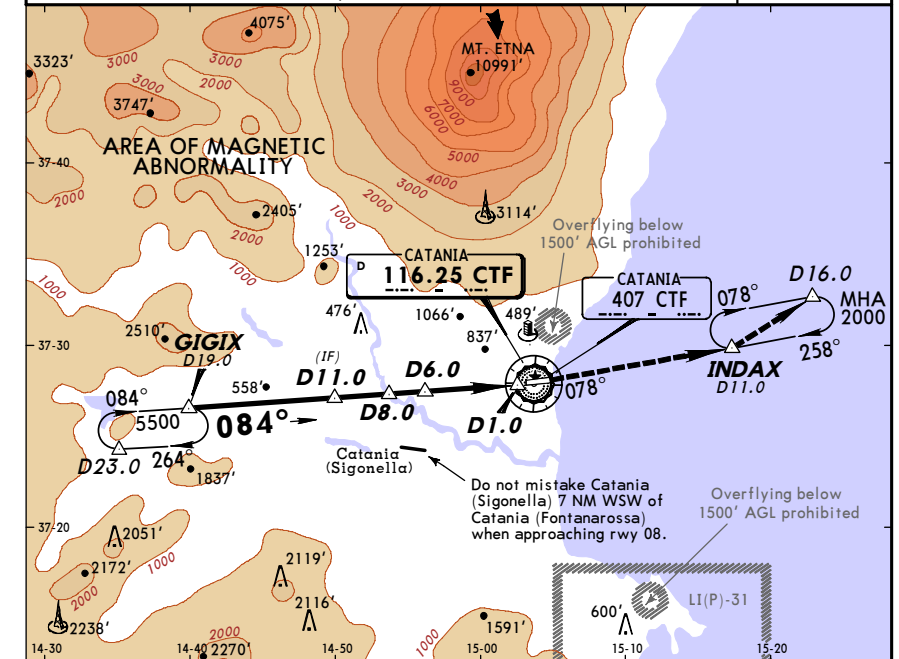


Gnd speed-Kts	70	90	100	120	140	160	PAPI	D2.0 CTF on 082°
ILS GS 3.00° or	377	485	539	647	755	862		
LOC Descent Gradient 5.2%								

JAR-OPS	STRAIGHT-IN LANDING RWY 08		CIRCLE-TO-LAND I	
	Missed apch climb gradient mim 3.2%		Not authorized North of airport	
DA(H)	ILS	LOC (GS out)	ILS	LOC (GS out)
A: 268' (231')	C: 288' (251')	650' (613')	A: 268' (231')	C: 288' (251')
B: 278' (241')	D: 298' (261')	1250' (1213')	B: 278' (241')	D: 298' (261')
		1250' (1213')		
		1250' (1213')		
A	RVR 1000m	RVR 1500m	RVR 1500m	
B				
C	RVR 1200m	RVR 2000m	RVR 2000m	
D				

LICC/CTA CATANIA, ITALY
 FONTANAROSSA 16 DEC 05 (13-1) Eff 22 Dec VOR-Z Rwy 08

CATANIA Radar (APP) 119.25		CATANIA Tower 118.7		*Ground 129.72	
VOR CTF 116.25	Final ApcH Crs 084°	Minimum Alt D6.0 1850' (1813')	MDA(H) 650' (613')	Apt Elev 39'	RWY 37'
MISSED APCH: As soon as practicable join R-078 and climb to 2000' to INDAX and hold.					
Alt Set: hPa Rwy Elev: 1 hPa Trans level: By ATC Trans alt: 7000' 1. DME REQUIRED. 2. Mt ETNA 10991' 17.0 NM North of apt. 3. Possible existence of volcanic cloud up to 20000'.					

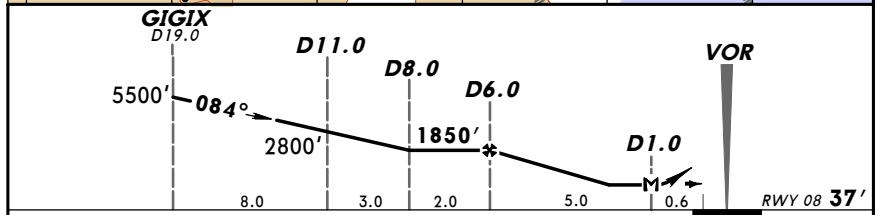
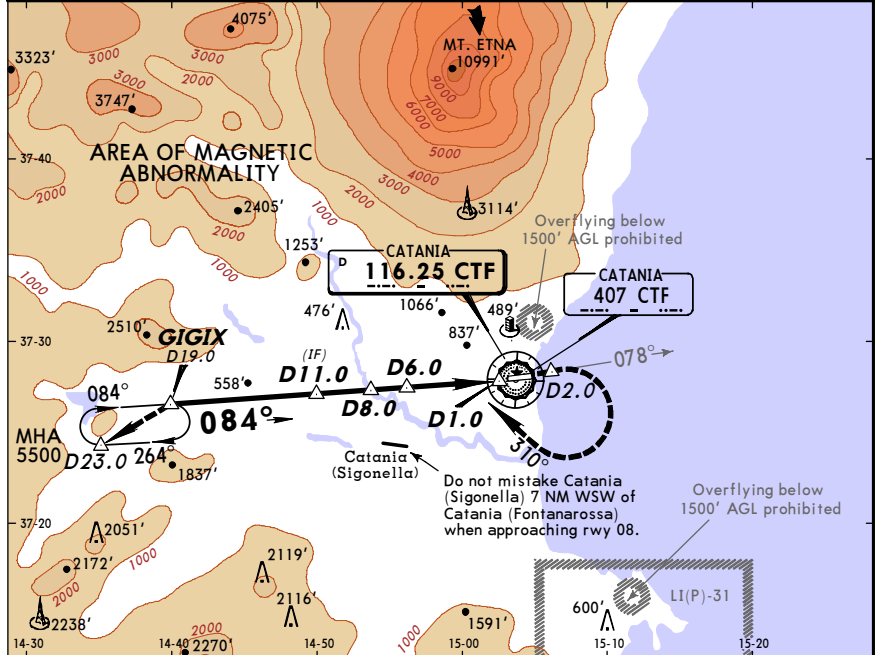


Gnd speed-Kts	70	90	100	120	140	160	PAPI	2000' CTF onto 116.25 INDAX LT R-078
ILS GS 3.00° or	377	485	539	647	755	862		
LOC Descent Gradient 5.2%								

JAR-OPS	STRAIGHT-IN LANDING RWY 08		CIRCLE-TO-LAND	
	Missed apch climb gradient mim 3.2%		Not authorized North of airport	
DA(H)	ILS	LOC (GS out)	ILS	LOC (GS out)
A: 268' (231')	C: 288' (251')	650' (613')	A: 268' (231')	C: 288' (251')
B: 278' (241')	D: 298' (261')	1250' (1213')	B: 278' (241')	D: 298' (261')
		1250' (1213')		
		1250' (1213')		
A	RVR 1000m	RVR 1500m	RVR 1500m	
B				
C	RVR 1200m	RVR 2000m	RVR 2000m	
D				

LICC/CTA CATANIA, ITALY
 FONTANAROSSA 16 DEC 05 (13-2) CONTINGENCY VOR-Y Rwy 08

CATANIA Radar (APP) 119.25		CATANIA Tower 118.7		*Ground 129.72
VOR CTF 116.25	Final ApcH Crs 084°	Minimum Alt D6.0 (1813')	MDA(H) Refer to Minimums	Apt Elev 39' RWY 37'
MISSED APCH: As soon as practicable join R-078 and climb to 5500'. At D2.0 turn RIGHT (MAX 200 KT) onto 310° to join and follow R-264 to holding.				
Alt Set: hPa Rwy Elev: 1 hPa Trans level: By ATC Trans alt: 7000' 1. DME REQUIRED. 2. Mt ETNA 10991' 17.0 NM North of apt. 3. Possible existence of volcanic cloud up to 20000'.				



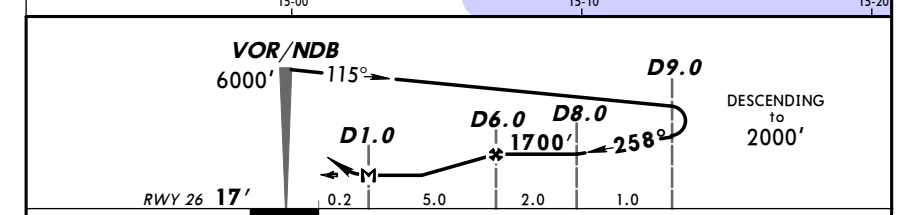
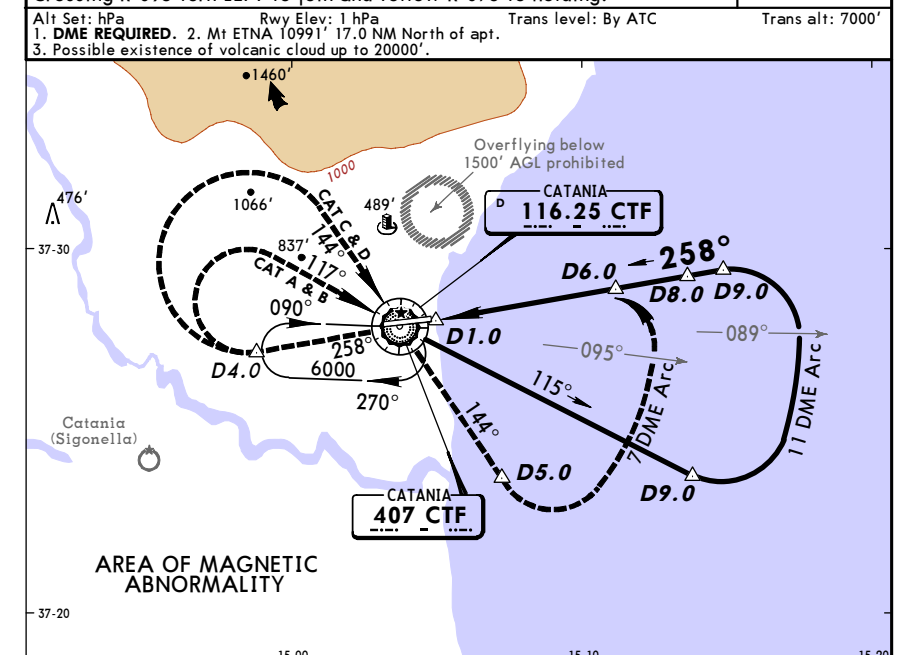
MAP at D1.0		PAPI	D2.0 CTF on 116.25 R-078
-------------	--	------	--------------------------

JAR-OPS STRAIGHT-IN LANDING RWY 08		CIRCLE-TO-LAND	
Missed apch climb gradient mim 3.2%		Not authorized North of airport	
MDA(H)	650' (613')	MDA(H)	1250' (1213')
A	RVR 1500m	100	650' (611') 1500m
B	RVR 1500m	135	650' (611') 1600m
C	RVR 2000m	180	780' (741') 2400m
D	RVR 2000m	205	800' (761') 3600m

With missed apch climb gradient mim 2.5%: MDA(H) 1250' (1211').
 CHANGES: Chart reindexed. © JEPPESEN SANDERSON, INC., 2005. ALL RIGHTS RESERVED.

LICC/CTA CATANIA, ITALY
 FONTANAROSSA 16 DEC 05 (13-3) CONTINGENCY VOR-Z or NDB Rwy 26

CATANIA Radar (APP) 119.25		CATANIA Tower 118.7		*Ground 129.72
VOR CTF 116.25	Final ApcH Crs 258°	Minimum Alt D6.0 (1683')	MDA(H) 630' (613')	Apt Elev 39' RWY 17'
NDB CTF 407				
MISSED APCH: Climb to 5000' and proceed on 258°. At D4.0 turn RIGHT (MAX 210 KT) onto 144° (CAT A & B: 117°) to VOR/NDB. Leave VOR/NDB on R-144. At D5.0 turn LEFT to join and follow 7 DME Arc. Crossing R-095 turn LEFT to join and follow R-078 to holding.				
Alt Set: hPa Rwy Elev: 1 hPa Trans level: By ATC Trans alt: 7000' 1. DME REQUIRED. 2. Mt ETNA 10991' 17.0 NM North of apt. 3. Possible existence of volcanic cloud up to 20000'.				



MAP at D1.0		PAPI	D4.0 on 258°
-------------	--	------	--------------

JAR-OPS STRAIGHT-IN LANDING RWY 26		CIRCLE-TO-LAND	
MDA(H) 630' (613')		Not authorized North of airport	
Max Kts	MDA(H)	MDA(H)	VIS
A	630' (591')	100	1500m
B	630' (591')	135	1600m
C	780' (741')	180	2400m
D	800' (761')	205	3600m

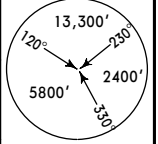
CHANGES: Chart reindexed. © JEPPESEN SANDERSON, INC., 2005. ALL RIGHTS RESERVED.

LICC/CTA
 FONTANAROSSA

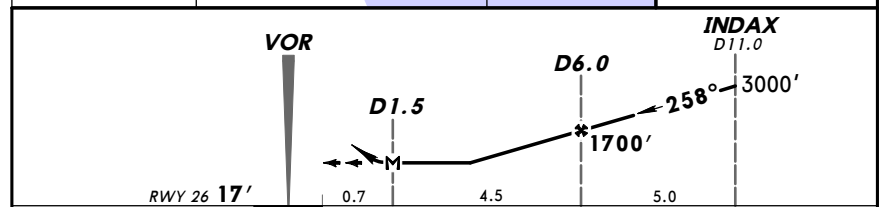
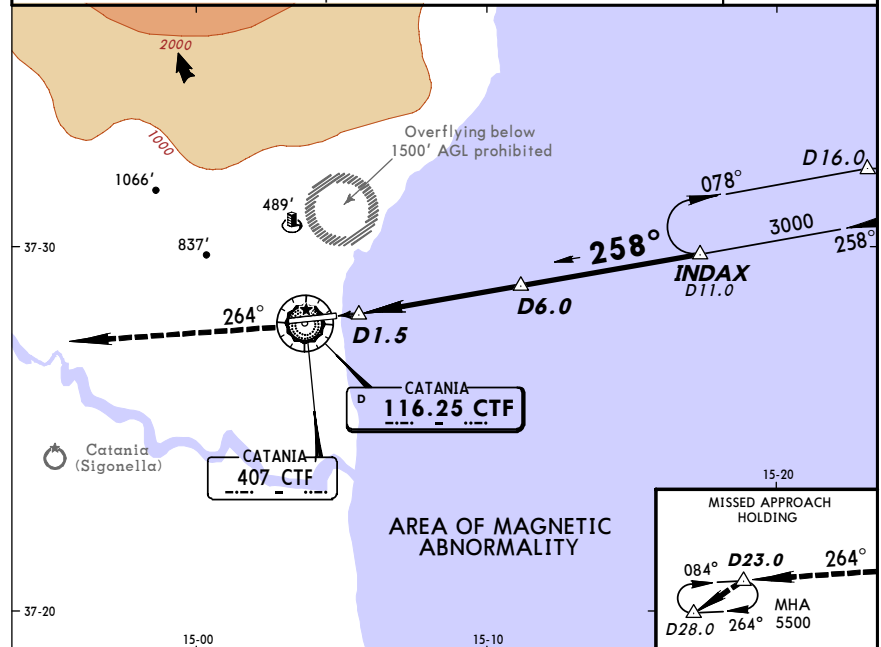
JEPPESEN
 16 DEC 05 (13-4) Eff 22 Dec

CATANIA, ITALY
 VOR-Y Rwy 26

CATANIA Radar (APP) 119.25		CATANIA Tower 118.7		*Ground 129.72
VOR CTF 116.25	Final Apch Crs 258°	Minimum Alt D6.0 1700' (1683')	MDA(H) Refer to Minimums	Apt Elev 39' RWY 17'
MISSED APCH: Climb to 5500' to VOR and proceed on R-264 to holding.				
Alt Set: hPa Rwy Elev: 1 hPa Trans level: By ATC Trans alt: 7000'				
1. DME REQUIRED. 2. Mt ETNA 10991' 17.0 NM North of apt. 3. Possible existence of volcanic cloud up to 20000'.				



MSA
 CTF VOR/NDB



MAP at D1.5		PAPI	5500' CTF on 116.25 R-264
-------------	--	------	---------------------------------

JAR-OPS		STRAIGHT-IN LANDING RWY 26		CIRCLE-TO-LAND I	
Missed apch climb gradient mim 3.2%		Missed apch climb gradient mim 2.5%		Not authorized North of airport	
MDA(H) 630' (613')		MDA(H) 1250' (1233')			
A	RVR 1500m	RVR 1500m	Max Kts 100	MDA(H) 630' (591')	VIS 1500m
B	RVR 2000m	RVR 2000m	135	630' (591')	1600m
C			180	780' (741')	2400m
D			205	800' (761')	3600m

With missed apch climb gradient mim 2.5%: MDA(H) 1250' (1211').
 CHANGES: Chart reindexed. © JEPPESEN SANDERSON, INC., 2005. ALL RIGHTS RESERVED.

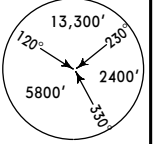
PANS OPS 4

LICC/CTA
 FONTANAROSSA

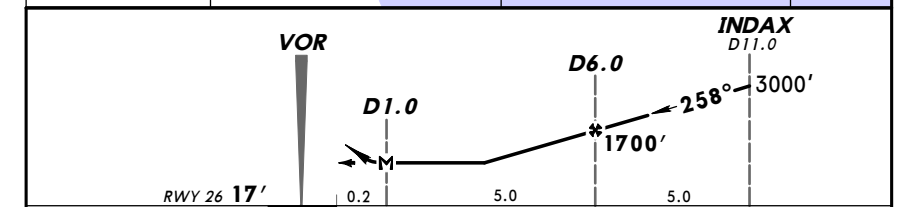
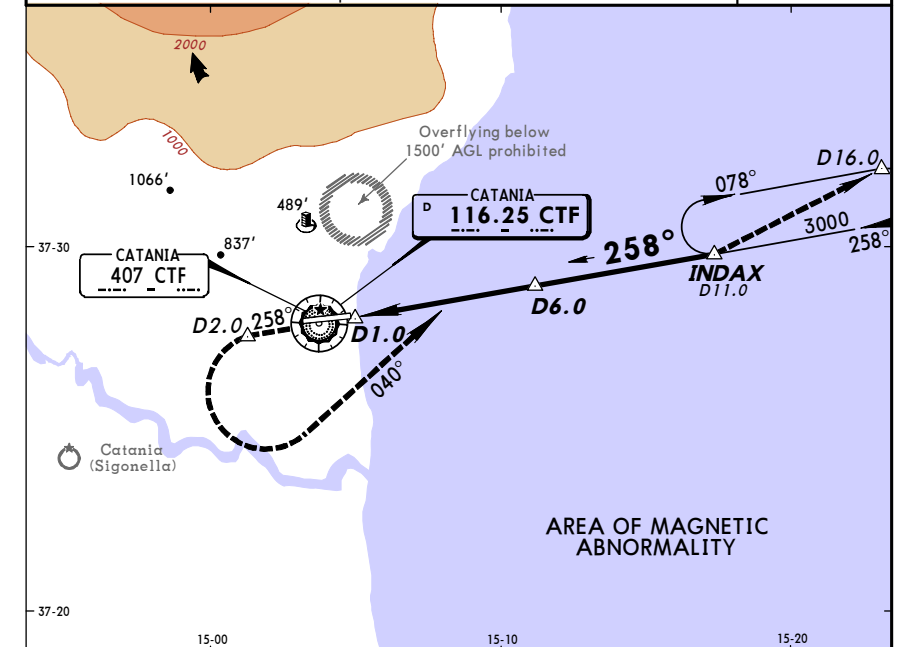
JEPPESEN
 16 DEC 05 (13-5) Eff 22 Dec

CATANIA, ITALY
 CONTINGENCY VOR-X Rwy 26

CATANIA Radar (APP) 119.25		CATANIA Tower 118.7		*Ground 129.72
VOR CTF 116.25	Final Apch Crs 258°	Minimum Alt D6.0 1700' (1683')	MDA(H) 630' (613')	Apt Elev 39' RWY 17'
MISSED APCH: Climb to 3000' and proceed on R-258. At D2.0 turn LEFT onto 040° to join and follow R-078 to INDAX holding.				
Alt Set: hPa Rwy Elev: 1 hPa Trans level: By ATC Trans alt: 7000'				
1. DME REQUIRED. 2. Mt ETNA 10991' 17.0 NM North of apt. 3. Possible existence of volcanic cloud up to 20000'.				



MSA
 CTF VOR/NDB



MAP at D1.0		PAPI	D2.0 CTF on 116.25 R-258
-------------	--	------	--------------------------------

JAR-OPS		STRAIGHT-IN LANDING RWY 26		CIRCLE-TO-LAND	
Missed apch climb gradient mim 3.2%		Missed apch climb gradient mim 2.5%		Not authorized North of airport	
MDA(H) 630' (613')		MDA(H) 1250' (1233')			
A	RVR 1500m	RVR 1500m	Max Kts 100	MDA(H) 630' (591')	VIS 1500m
B	RVR 2000m	RVR 2000m	135	630' (591')	1600m
C			180	780' (741')	2400m
D			205	800' (761')	3600m

CHANGES: Chart reindexed. © JEPPESEN SANDERSON, INC., 2005. ALL RIGHTS RESERVED.

PANS OPS 4

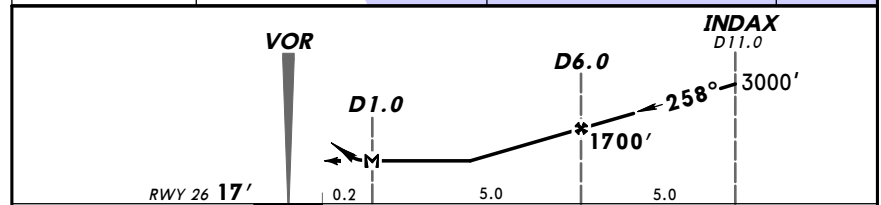
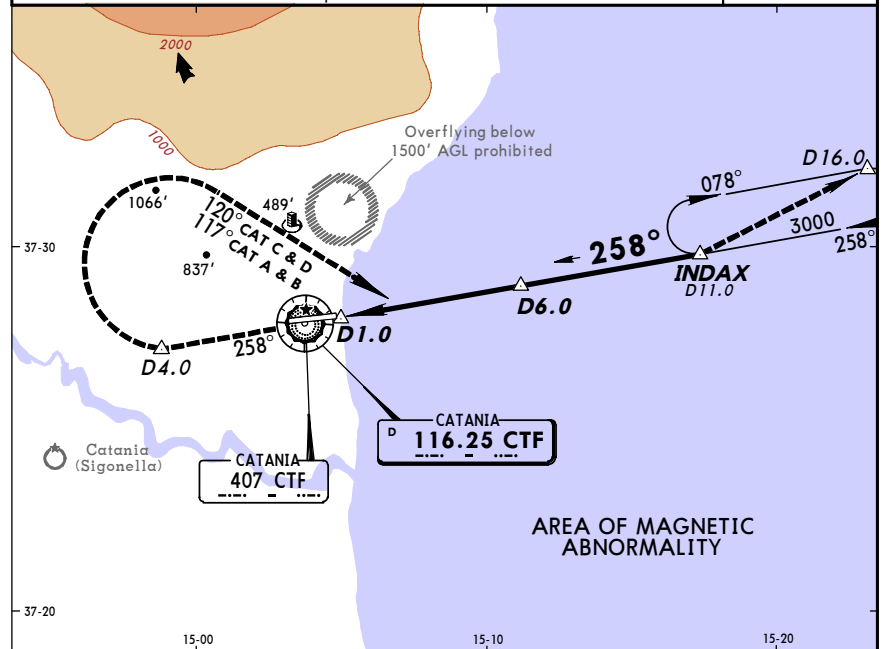
LICC/CTA FONTANAROSSA CATANIA, ITALY
 16 DEC 05 (13-6) Eff 22 Dec VOR-W Rwy 26

CATANIA Radar (APP) 119.25		CATANIA Tower 118.7		*Ground 129.72
VOR CTF 116.25	Final Apch Crs 258°	Minimum Alt D6.0 1700' (1683')	MDA(H) 630' (613')	Apt Elev 39' RWY 17'

MISSED APCH: Climb to 3000' and proceed on R-258. At D4.0 turn RIGHT (MAX 185 KT) onto 120° (CAT A & B: 117°) to join R-078 to INDAX holding.

Alt Set: hPa Rwy Elev: 1 hPa Trans level: By ATC Trans alt: 7000'

1. DME REQUIRED. 2. Mt ETNA 10991' 17.0 NM North of apt.
 3. Possible existence of volcanic cloud up to 20000'.



PAPI		D4.0	CTF
		↑	on 116.25
MAP at D1.0			R-258

JAR-OPS STRAIGHT-IN LANDING RWY 26		CIRCLE-TO-LAND Not authorized North of airport	
MDA(H) 630' (613')		Max Kts	MDA(H) VIS
A	RVR 1500m	100	630' (591') 1500m
B		135	630' (591') 1600m
C	RVR 2000m	180	780' (741') 2400m
D		205	800' (761') 3600m

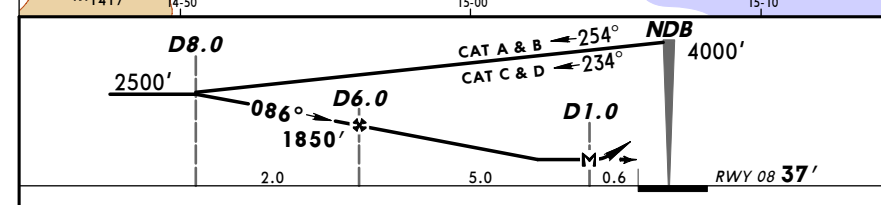
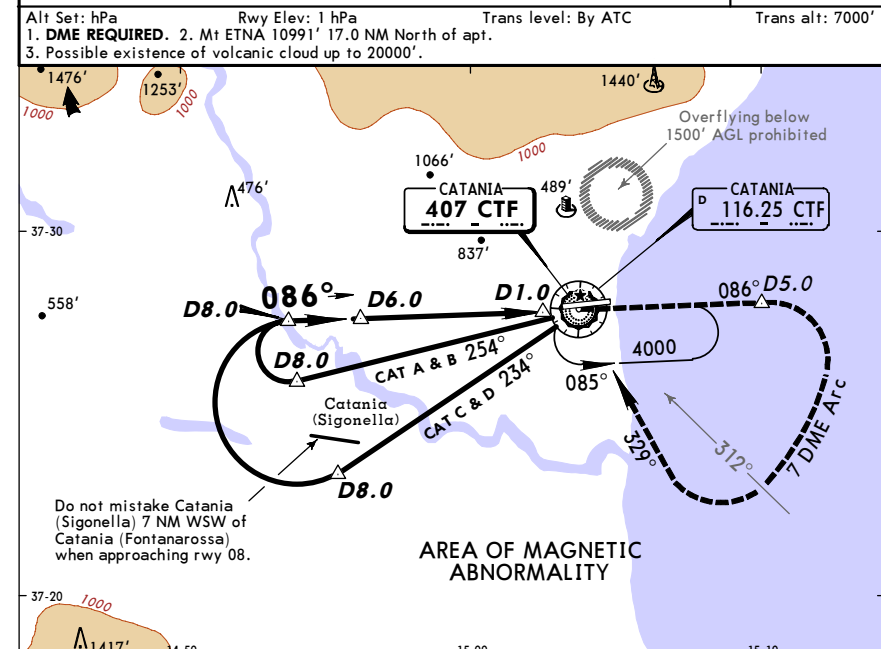
LICC/CTA FONTANAROSSA CATANIA, ITALY
 16 DEC 05 (16-1) Eff 22 Dec NDB Rwy 08

CATANIA Radar (APP) 119.25		CATANIA Tower 118.7		*Ground 129.72
NDB CTF 407	Final Apch Crs 086°	Minimum Alt D6.0 1850' (1813')	MDA(H) 700' (663')	Apt Elev 39' RWY 37'

MISSED APCH: Climb to 3000' and proceed on 086°. At D5.0 turn RIGHT to join and follow 7 DME Arc. When crossing 312° CTF NDB turn RIGHT onto 329° to NDB holding.

Alt Set: hPa Rwy Elev: 1 hPa Trans level: By ATC Trans alt: 7000'

1. DME REQUIRED. 2. Mt ETNA 10991' 17.0 NM North of apt.
 3. Possible existence of volcanic cloud up to 20000'.



PAPI		D5.0	on 086°
MAP at D1.0			
JAR-OPS STRAIGHT-IN LANDING RWY 08		CIRCLE-TO-LAND Not authorized North of airport	

JAR-OPS STRAIGHT-IN LANDING RWY 08		CIRCLE-TO-LAND Not authorized North of airport	
MDA(H) 700' (663')		Max Kts	MDA(H) VIS
A	RVR 1500m	100	700' (661') 1500m
B		135	700' (661') 1600m
C	RVR 2000m	180	780' (741') 2400m
D		205	800' (761') 3600m